

N/F
BRENT LEE KIPLINGER &
BEVERLY F. KIPLINGER
DB 132/535
PB 13/464
TMP 37/96C
ZONING AR (COUNTY)
LANDUSE:
RESIDENTIAL

N/F
BROUGHTON-SANDERS FAMILY FARM, LLLP
DB 241/250
PB 3/368A
TMP 37/72A
ZONING M-1 (COUNTY)
LANDUSE:
UNDEVELOPED

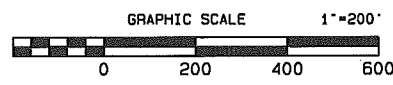
N/F
GEORGE J. HANES
TMP 37/124B
ZONING M-1 (COUNTY)
LANDUSE:
AGRICULTURAL

N/F
MARY SHIRLEY PRIEST
DB 128/647
PB 12/160
TMP 37D/13
ZONING R6/C4 (SPLIT ZONED)
LANDUSE:
UNDEVELOPED

N/F
GEORGE J. HANES
TMP 37/124BZ
ZONING I-2
LANDUSE:
AGRICULTURAL

N/F
JAMES D. BRANCH & JOHN H. MORRIS, JR.
DB 132/475
PB 13/148
ZONING C-4
LANDUSE:
UNDEVELOPED

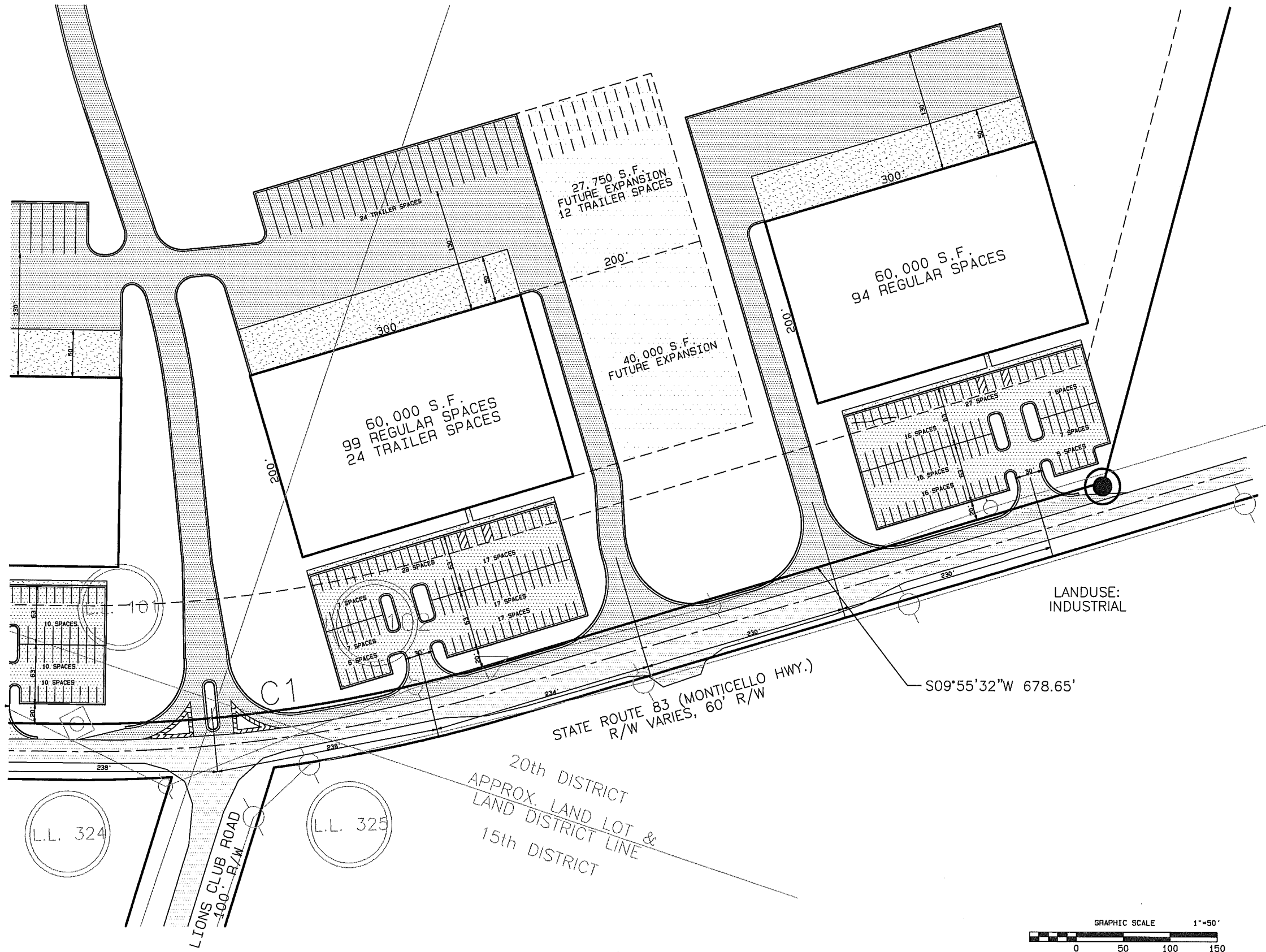
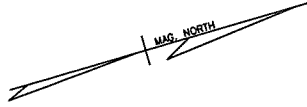
CURVE TABLE			
CURVE	LENGTH	RADIUS	BEARING
C1	448.94	1542.42	S18°19'52" W
			447.36



NOTE:
GAS LINE EXIST IN
R/W ON PROPERTY
SIDE OF HIGHWAY
BUT DOES NOT CROSS
SUBJECT

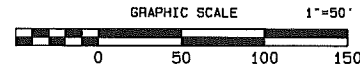
POB - 1/2" REBAR PLACED,
DIP FOUND 80% FROM
8.87' BACK FROM REBAR
PLACED 8" IN, 1.87' FROM
UTILITY POLE

1 1/4" SO. PH FOUND,
S 48°41'01" E 4.92'
FROM CORNER
TO
U.S. 278



LANDUSE:
INDUSTRIAL

20th DISTRICT
APPROX. LAND LOT &
LAND DISTRICT LINE
15th DISTRICT



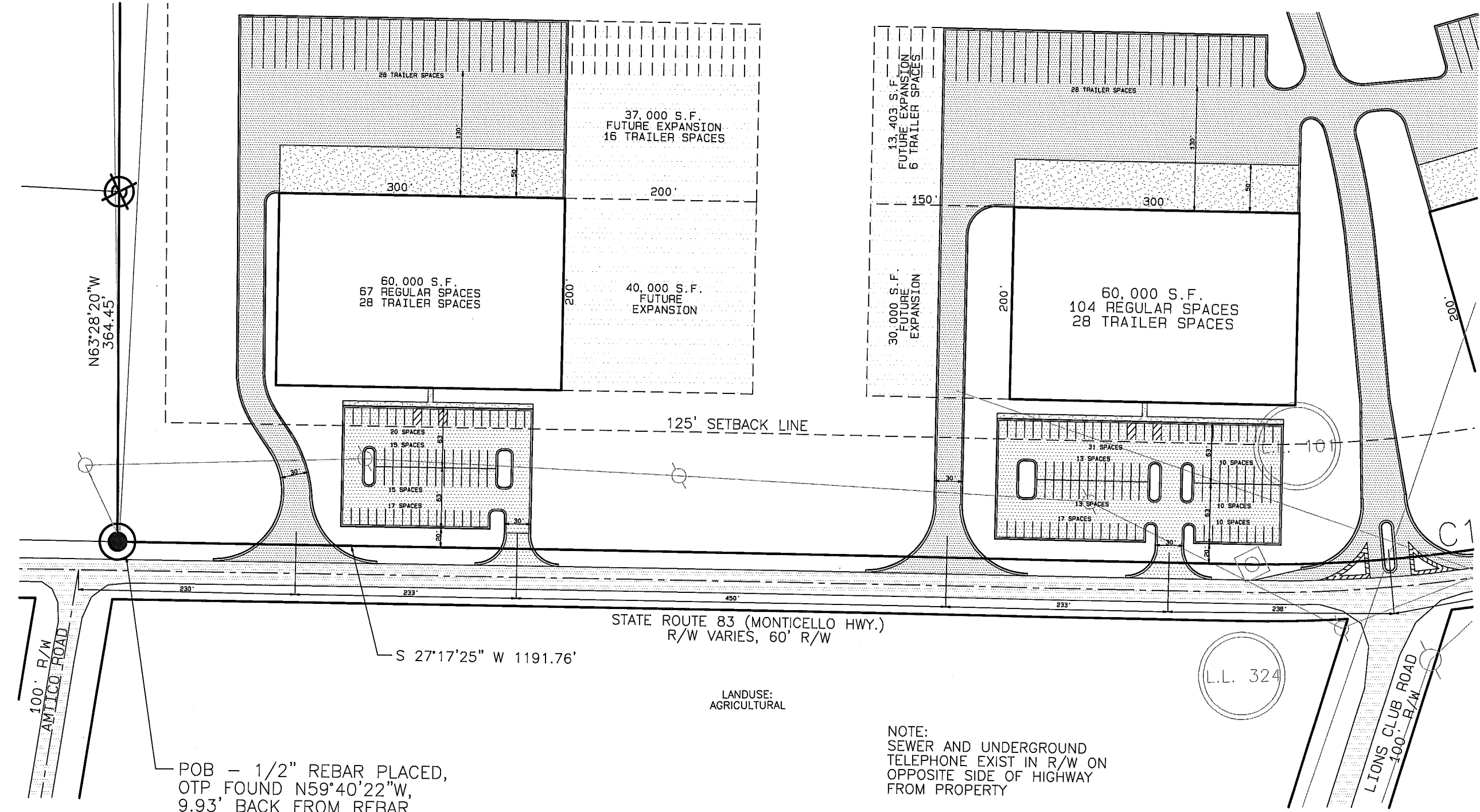
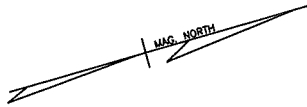
DESIGN D.A.
DRAWN K.L.
CHECKED D.A.
Q.C. _____

JOHN W. ROOKER AND ASSOC., INC.

MADISON FARMS

PRELIMINARY
SITE PLAN

5					
4					
3					
2					
1					
NO.	DATE	REVISION	APP'D. BY	JOB NO.	
				F.B. NO.	
				DATE	07/25/08
				SHT	1 OF 1



N63°28'20"W
364.45'

100' R/W
AMTICO ROAD

60,000 S.F.
67 REGULAR SPACES
28 TRAILER SPACES

40,000 S.F.
FUTURE EXPANSION

37,000 S.F.
FUTURE EXPANSION
16 TRAILER SPACES

30,000 S.F.
FUTURE EXPANSION

13,403 S.F.
FUTURE EXPANSION
6 TRAILER SPACES

60,000 S.F.
104 REGULAR SPACES
28 TRAILER SPACES

125' SETBACK LINE

STATE ROUTE 83 (MONTICELLO HWY.)
R/W VARIES, 60' R/W

S 27°17'25" W 1191.76'

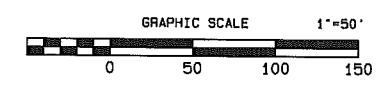
LANDUSE:
AGRICULTURAL

L.L. 324

LIONS CLUB ROAD
100' R/W

POB - 1/2" REBAR PLACED,
OTP FOUND N59°40'22"W,
9.93' BACK FROM REBAR
PLACED & NW, 1.67' FROM
UTILITY POLE

NOTE:
SEWER AND UNDERGROUND
TELEPHONE EXIST IN R/W ON
OPPOSITE SIDE OF HIGHWAY
FROM PROPERTY



DESIGN D.A.
DRAWN K.L.
CHECKED D.A.
G.C.

JOHN W. ROOKER AND ASSOC., INC.

MADISON FARMS

PRELIMINARY
SITE PLAN

5				JOB NO.	
4				FB. NO.	
3				DATE	07/25/08
2					
1					
NO.	DATE	REVISION	APP'D. BY	SHT 1 OF 1	