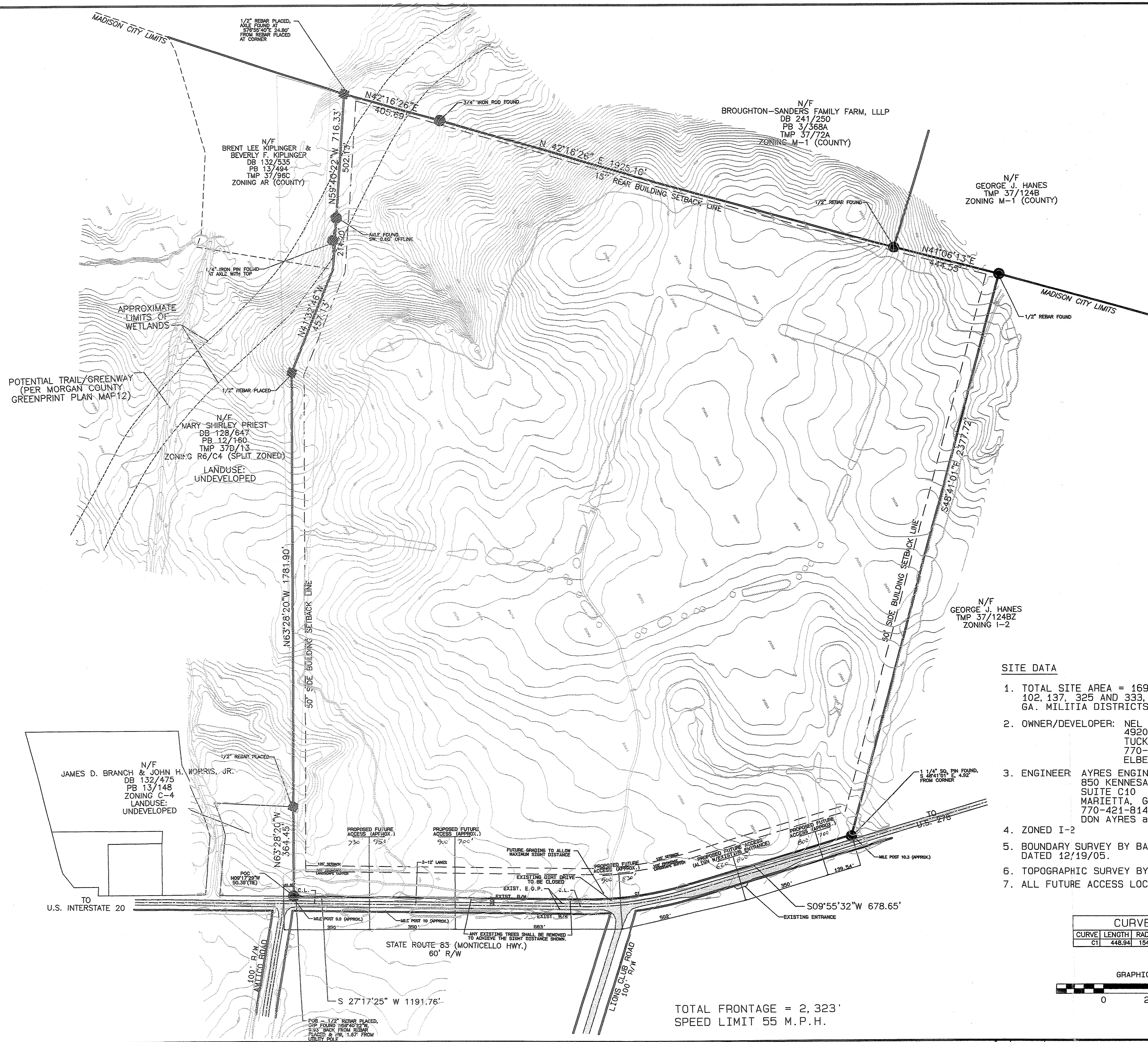


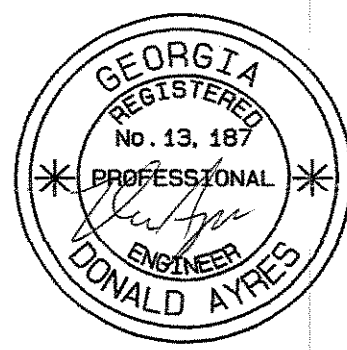
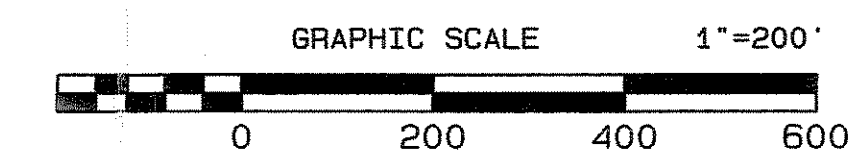
SUBDIVISION APPROVED
[Signature]
 DISTRICT ENGINEER - GA. D.O.T.
 DATE: OCT 17 2008



SITE DATA

- TOTAL SITE AREA = 169.60 AC. LOCATED IN LAND LOTS 102, 137, 325 AND 333, IN LAND DISTRICTS 15TH AND 20TH GA. MILITIA DISTRICTS 276 AND 286 MORGAN, CO. CITY OF MADISON
- OWNER/DEVELOPER: NEL - UNITED ASSOCIATES
 4920 NORTH ROYAL ATLANTA DR.
 TUCKER, GA. 30084
 770-491-7711
 ELBERT RIVERS elbertrivers@johnwrocker.com
- ENGINEER: AYRES ENGINEERING
 850 KENNESAW AVENUE
 SUITE C10
 MARIETTA, GA. 30060
 770-421-8140
 DON AYRES ayreseng@bellsouth.net
- ZONED I-2
- BOUNDARY SURVEY BY BALDWIN ENGINEERING SERVICES, INC. DATED 12/19/05.
- TOPOGRAPHIC SURVEY BY JACK BERRY AND ASSOC.
- ALL FUTURE ACCESS LOCATIONS ARE APPROXIMATE.

CURVE TABLE			
CURVE	LENGTH	RADIUS	BEARING
C1	448.94	1542.42	S18°19'52"W
			447.36



TOTAL FRONTAGE = 2,323'
 SPEED LIMIT 55 M.P.H.

DESIGN D.A.
 DRAWN K.L.
 CHECKED D.A.
 G.C. _____

NEL - UNITED ASSOCIATES

MADISON FARM

**GA. D.O.T.
 ACCESS PLAN**

NO.	DATE	REVISION	APPD. BY
5			
4			
3			
2			
1			

JOB NO.	
P.B. NO.	
DATE	08/28/08
SHT	1 OF 1