



2805 Ramsey Road
Gainesville, GA 30501



For Lease
±2,808 SF
Hall County



Industrial Properties Group
PO Box 364, Gainesville, GA 30503
770.536.6555
www.ipgproperties.com

Drew C. Addison, SIOR
daddison@ipgproperties.com
678.316.2409 (cell)
770.536.6555 x 232 (office)

Palmer H. Loggins
ploggins@ipgproperties.com
770.561.3751 (cell)
770.536.6555 x 234 (office)

PROPERTY OVERVIEW

2805 Ramsey Road | Gainesville, GA 30501



For Sale
±2,808 SF
Hall County

PROPERTY FEATURES:

±2,808 sq. ft. office building for lease in Gainesville, GA

10 private offices

Fenced parking (20 parking spaces)

Located just off Hwy 365 & only 0.3 miles to I-985

Ideal headquarters for developer, architect, engineer, surveyor or other industrial related companies

Great road visibility on the corner of White Sulphur Rd / Ramsey Rd

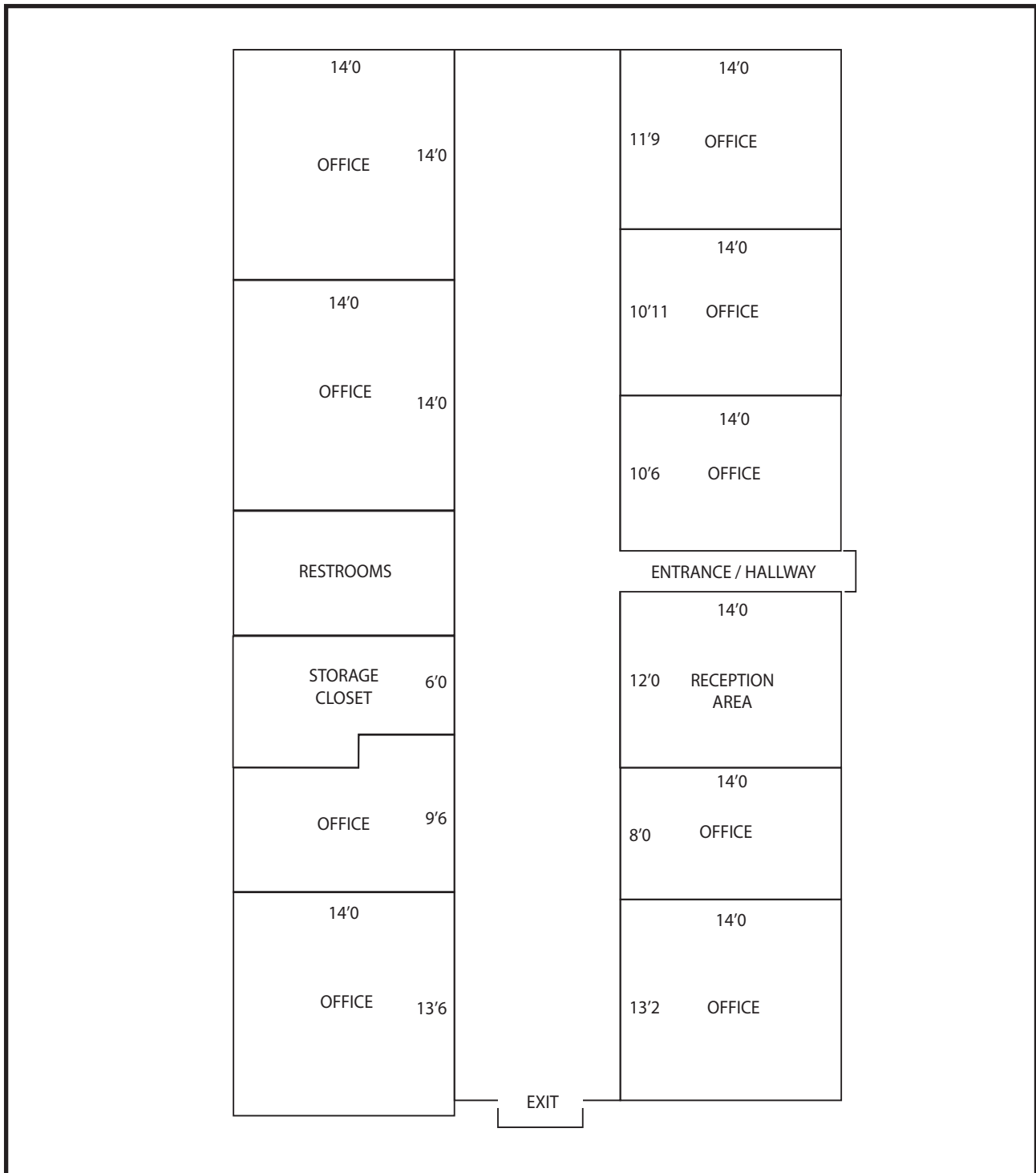
Directly across from new Sandra Dunagan Deal Elementary School



ipgproperties.com

BUILDING LAYOUT

2805 Ramsey Road | Gainesville, GA 30501



Drew C. Addison, SIOR

daddison@ipgproperties.com

678.316.2409 (cell)

770.536.6555 x 232 (office)

Palmer H. Loggins

ploggins@ipgproperties.com

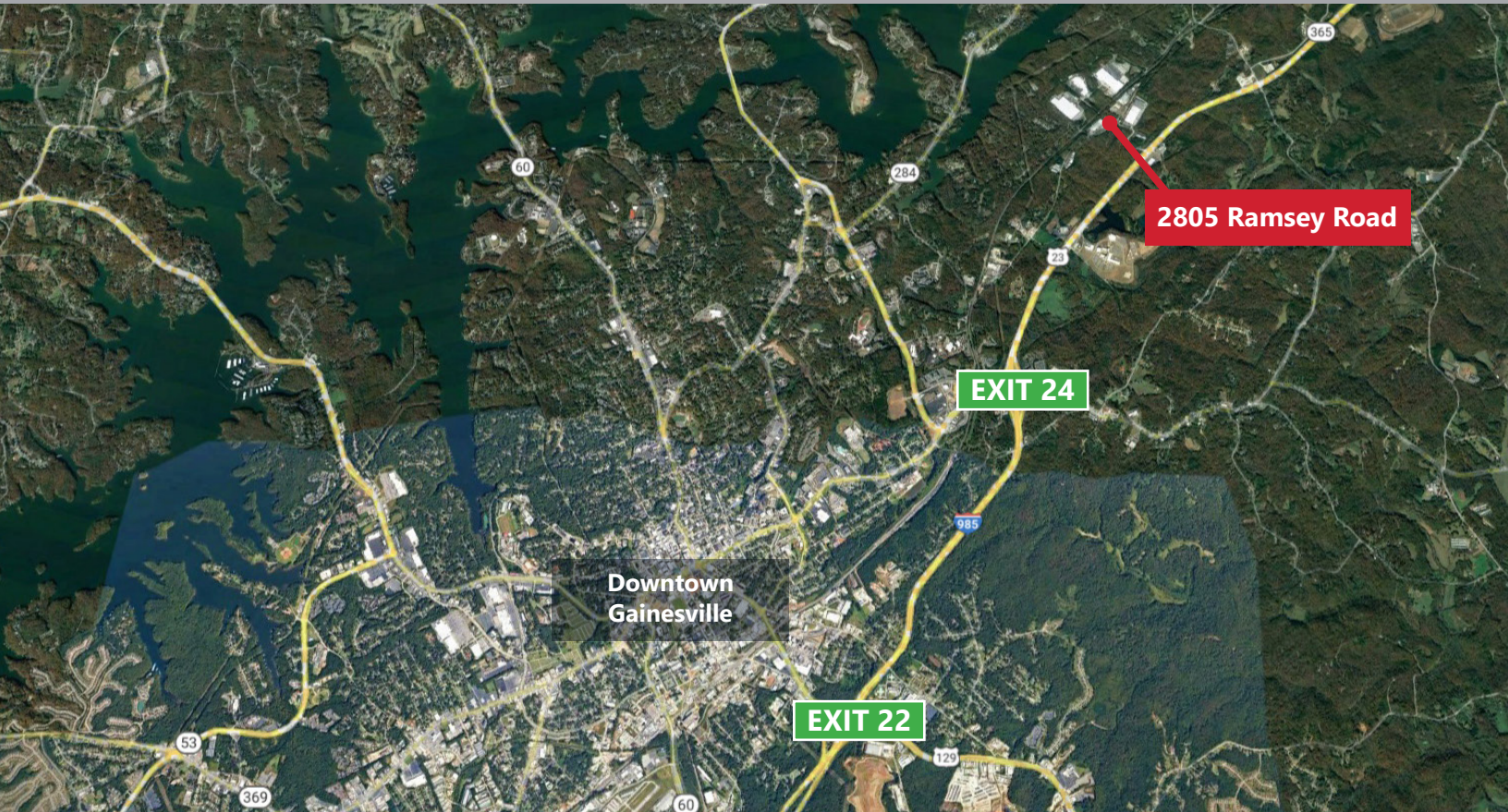
770.561.3751 (cell)

770.536.6555 x 234 (office)



LOCATION

2805 Ramsey Road | Gainesville, GA 30501



ABOUT HALL COUNTY:

Hall County is the epicenter of an aggressive economic environment in Northeast Georgia. Growth in both population, now estimated at 200,000, and economic bases has been steady and diversified for the last 20 years. The labor market is thriving with regional labor market numbers estimated to be 775,000 from Hall and surrounding counties.

DISTANCES:

Hwy 365:	±0.5 miles	Future Gainesville Inland Port:	±2 miles
I-985:	±3 miles	Downtown Atlanta:	±55 miles
I-85:	±26 miles	Hartsfield Jackson Int'l Airport:	±67 miles
I-285:	±45 miles	Greenville, SC:	±100 miles
Downtown Gainesville:	±5 miles		

Drew C. Addison, SIOR

daddison@ipgproperties.com

678.316.2409 (cell)

770.536.6555 x 232 (office)

Palmer H. Loggins

ploggins@ipgproperties.com

770.561.3751 (cell)

770.536.6555 x 234 (office)

