



2420 West Park Drive
Gainesville, GA 30504



For Lease
±200,000 SF
Hall County



Industrial Properties Group
PO Box 364, Gainesville, GA 30503
770.536.6555
www.ipgproperties.com

Floyd H. Baldwin, SIOR
fbaldwin@ipgproperties.com
770.287.5288 (cell)
770.536.6555 x 222 (office)

Drew C. Addison, SIOR
daddison@ipgproperties.com
678.316.2409 (cell)
770.536.6555 x 232 (office)

Palmer H. Loggins
ploggins@ipgproperties.com
770.561.3751 (cell)
770.536.6555 x 234 (office)

PROPERTY OVERVIEW

2420 West Park Drive, Gainesville, GA 30504



For Lease
±200,000 SF
Hall County

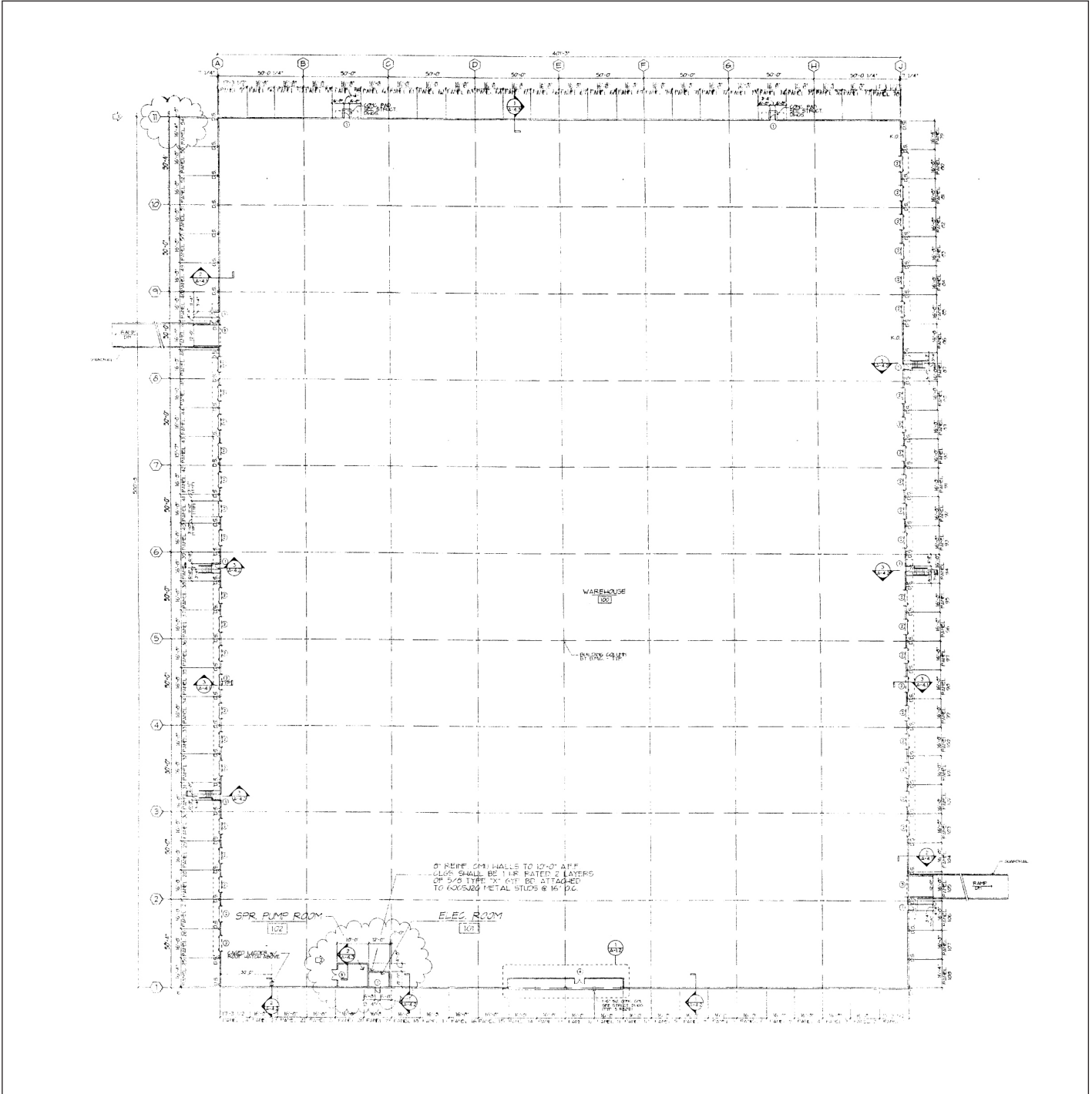
PROPERTY FEATURES:

±200,000 sq. ft. industrial building for lease
Located in Gainesville Industrial Park West
Cross dock warehouse
40 (9' x 10') dock high doors
2 (12' x 14') drive-in doors
±1,200 sq. ft. of office space

28' ceiling height
50' x 50' column spacing
Wet sprinkler - 100% coverage
1000 Amps 277/480 Volt Power
100 paved parking spaces
Convenient to Oakwood, Gainesville and I-985
Available end of year 2024

BUILDING LAYOUT

2420 West Park Drive, Gainesville, GA 30504



Floyd H. Baldwin, SIOR
fbaldwin@ipgproperties.com
770.287.5288 (cell)
770.536.6555 x 222 (office)

Drew C. Addison, SIOR
daddison@ipgproperties.com
678.316.2409 (cell)
770.536.6555 x 232 (office)

Palmer H. Loggins
ploggins@ipgproperties.com
770.561.3751 (cell)
770.536.6555 x 234 (office)



LOCATION

2420 West Park Drive, Gainesville, GA 30504



DISTANCES:

I-985, Exit 17:	±1.1 miles	Blue Ridge Connector:	±11 miles
I-85:	±17 miles	Downtown Gainesville:	±4.5 miles
I-285:	±35 miles	Downtown Atlanta:	±48 miles
Downtown Oakwood:	±2.6 miles	Hartsfield Jackson Int'l Airport:	±59 miles

Floyd H. Baldwin, SIOR

fbaldwin@ipgproperties.com

770.287.5288 (cell)

770.536.6555 x 222 (office)

Drew C. Addison, SIOR

daddison@ipgproperties.com

678.316.2409 (cell)

770.536.6555 x 232 (office)

Palmer H. Loggins

ploggins@ipgproperties.com

770.561.3751 (cell)

770.536.6555 x 234 (office)

