

Local Knowledge • Global Networks

3355 White Sulphur Rd

Gainesville, GA 30501



For Sale
±3.34 Acres
Hall County



Industrial Properties Group, Inc.
PO Box 364, Gainesville, GA 30503
770.536.6555
www.ipgproperties.com

Palmer Loggins
ploggins@ipgproperties.com
770.561.3751 (cell)
770.536.6555 x 234 (office)

Drew C. Addison, SIOR
daddison@ipgproperties.com
678.316.2409 (cell)
770.536.6555 x 232 (office)

Information contained herein is from sources deemed to be reliable. Information may not be verified and terms are subject to errors, omissions and change without notice.

PROPERTY OVERVIEW

3355 White Sulphur Rd | Gainesville, GA 30501



PROPERTY FEATURES:

±3.34 acres for sale in Gainesville, GA

Located at entrance of Blue Ridge Connector / Inland Port

Currently Zoned AR-III/IV

Potential for commercial redevelopment

Ideal for IOS or industries serving port operations

Great location between Atlanta and Greenville markets

Easy interstate and rail access

±0.5 miles to Hwy 365 / I-985 N



Palmer Loggins

ploggins@ipgproperties.com

770.561.3751 (cell)

770.536.6555 x 234 (office)

Drew C. Addison, SIOR

daddison@ipgproperties.com

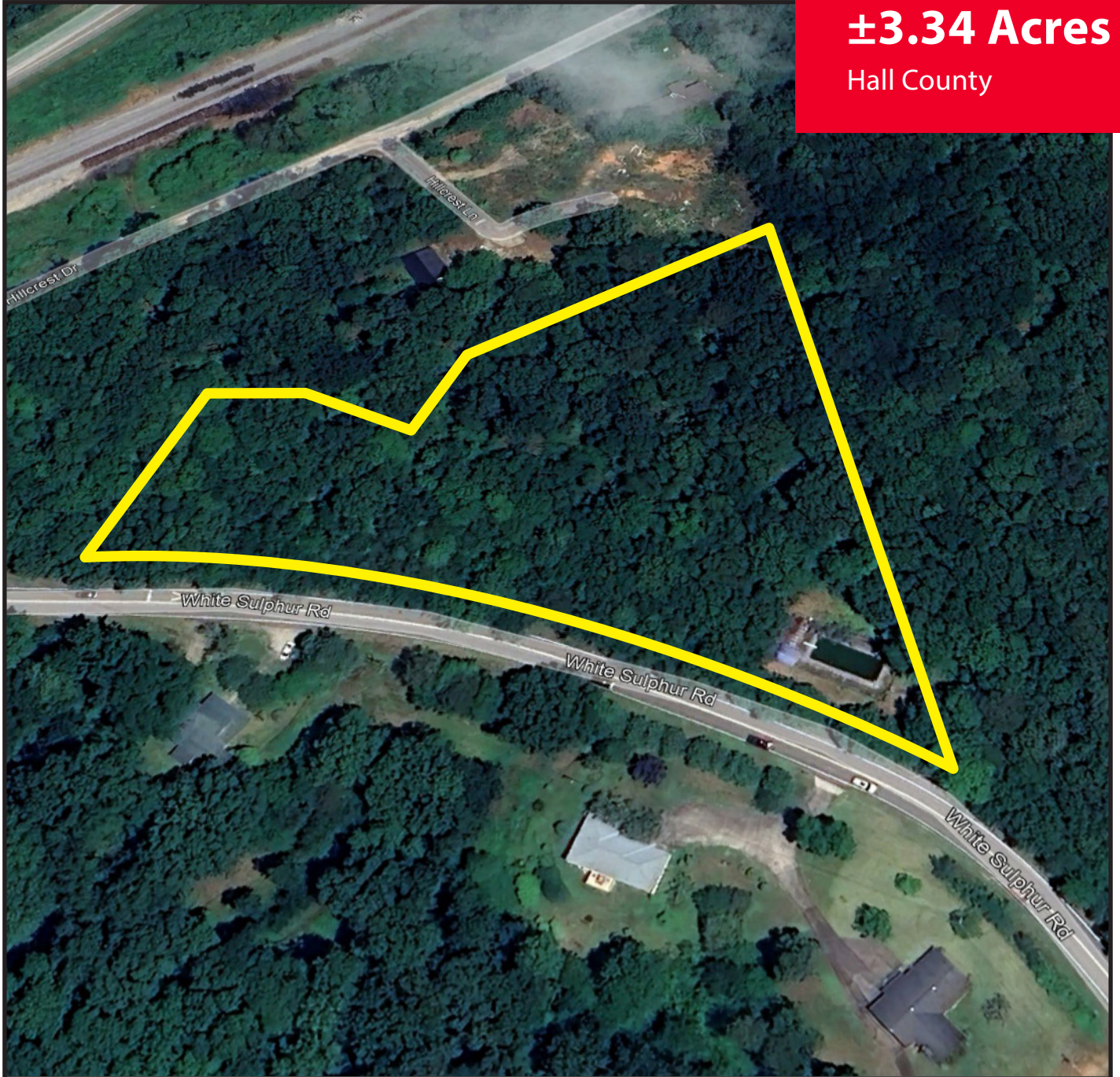
678.316.2409 (cell)

770.536.6555 x 232 (office)

AERIAL

3355 White Sulphur Rd | Gainesville, GA 30501

For Sale
±3.34 Acres
Hall County



LOCATION DETAILS

3355 White Sulphur Rd | Gainesville, GA 30501



DISTANCES:

I-985 / Hwy 365:	±0.5 miles	Downtown Atlanta:	±58 miles
I-85:	±27 miles	Hartsfield Jackson Int'l Airport:	±67 miles
Blue Ridge Connector:	±0.1 miles	Greenville, SC:	±99 miles
Downtown Gainesville:	±6.5 miles	Inland Port Greer (SC):	±116 miles
City of Oakwood:	±2.4 miles	Port of Savannah:	±253 miles



Local Knowledge • Global Networks

Palmer Loggins

ploggins@ipgproperties.com

770.561.3751 (cell)

770.536.6555 x 234 (office)

Drew C. Addison, SIOR

daddison@ipgproperties.com

678.316.2409 (cell)

770.536.6555 x 232 (office)