



3355 White Sulphur Rd

Gainesville, GA 30501



For Sale
±3.34 Acres
Hall County



Industrial Properties Group
PO Box 364, Gainesville, GA 30503
770.536.6555
www.ipgproperties.com

Drew C. Addison, SIOR
daddison@ipgproperties.com
678.316.2409 (cell)
770.536.6555 x 232 (office)

Palmer H. Loggins
ploggins@ipgproperties.com
770.561.3751 (cell)
770.536.6555 x 234 (office)

PROPERTY OVERVIEW

3355 White Sulphur Rd | Gainesville, GA 30501



PROPERTY FEATURES:

±3.34 acres for sale in Gainesville, GA

Located at entrance of Blue Ridge Connector / Inland Port

Currently Zoned AR-III/IV

Potential for commercial redevelopment

Ideal for IOS or industries serving port operations

Great location between Atlanta and Greenville markets

Easy interstate and rail access

±0.5 miles to Hwy 365 / I-985 N



Drew C. Addison, SIOR

daddison@ipgproperties.com

678.316.2409 (cell)

770.536.6555 x 232 (office)

Palmer H. Loggins

ploggins@ipgproperties.com

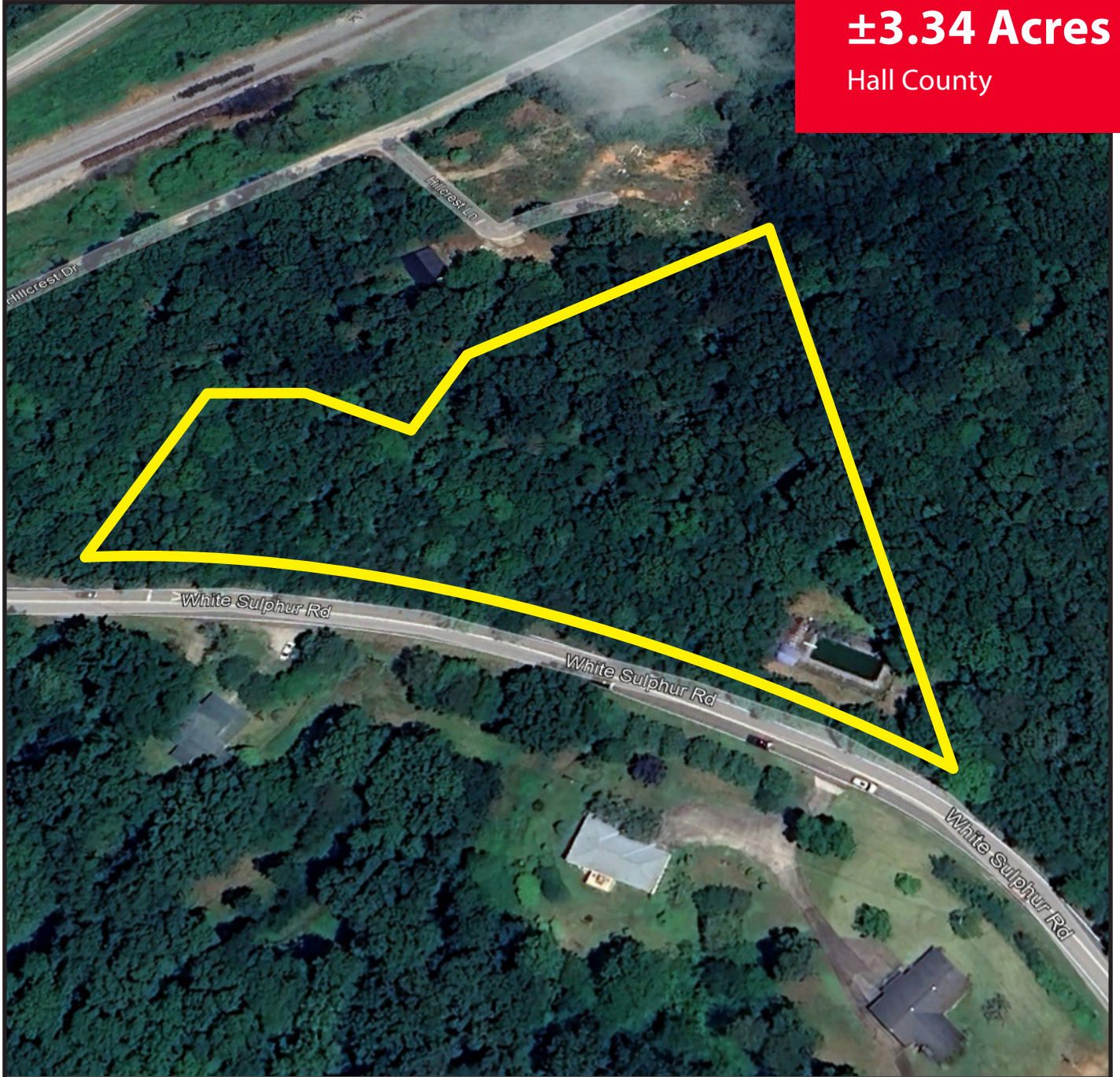
770.561.3751 (cell)

770.536.6555 x 234 (office)

AERIAL

3355 White Sulphur Rd | Gainesville, GA 30501

For Sale
±3.34 Acres
Hall County



LOCATION DETAILS

3355 White Sulphur Rd | Gainesville, GA 30501



DISTANCES:

I-985 / Hwy 365:	±0.5 miles	Downtown Atlanta:	±58 miles
I-85:	±27 miles	Hartsfield Jackson Int'l Airport:	±67 miles
Blue Ridge Connector:	±0.1 miles	Greenville, SC:	±99 miles
Downtown Gainesville:	±6.5 miles	Inland Port Greer (SC):	±116 miles
City of Oakwood:	±2.4 miles	Port of Savannah:	±253 miles

Drew C. Addison, SIOR

daddison@ipgproperties.com

678.316.2409 (cell)

770.536.6555 x 232 (office)

Palmer H. Loggins

ploggins@ipgproperties.com

770.561.3751 (cell)

770.536.6555 x 234 (office)

