



# 5445 Rafe Banks Dr, Units A-D

Flowery Branch, GA 30542



**For Lease**  
**±42,394 SF**  
Hall County



**IPG Properties**  
PO Box 364, Gainesville, GA 30503  
770.536.6555  
[www.ipgproperties.com](http://www.ipgproperties.com)

**Floyd H. Baldwin, SIOR**  
fbaldwin@ipgproperties.com  
770.287.5288 (cell)  
770.536.6555 x 222 (office)

**Drew C. Addison, SIOR**  
daddison@ipgproperties.com  
678.316.2409 (cell)  
770.536.6555 x 232 (office)

**Palmer H. Loggins**  
ploggins@ipgproperties.com  
770.561.3751 (cell)  
770.536.6555 x 234 (office)

# PROPERTY OVERVIEW

5445 Rafe Banks Drive, Units A-D, Flowery Branch, GA 30542



**For Lease**  
**±42,394 SF**  
Hall County

## PROPERTY FEATURES:

±42,394 sq. ft. industrial space for lease

±2,636 sq. ft. of office space

22' clear height

40' x 52' column spacing

LED motion sensor fixtures

200A @ 277/480V, 3-phase power

2 drive-in doors (1 oversized at 12' x 14'; 1 at 9' x 10')

12 dock high doors  
(6 w/ pit levelers, 1 oversized 12' x 14')

120' truck court w/ 50' concrete pad & 70' heavy duty asphalt

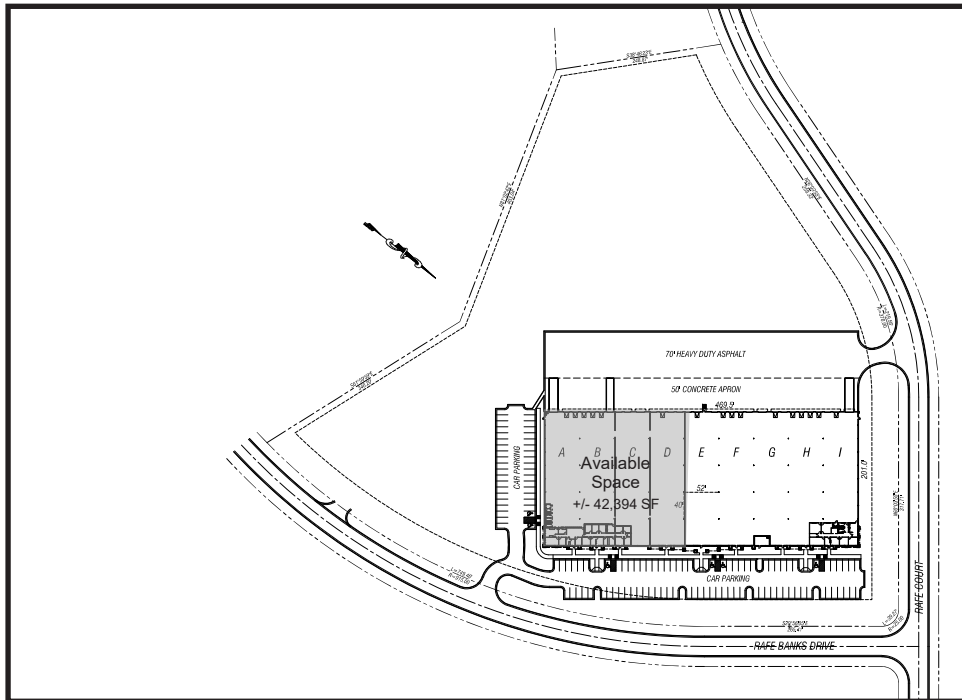
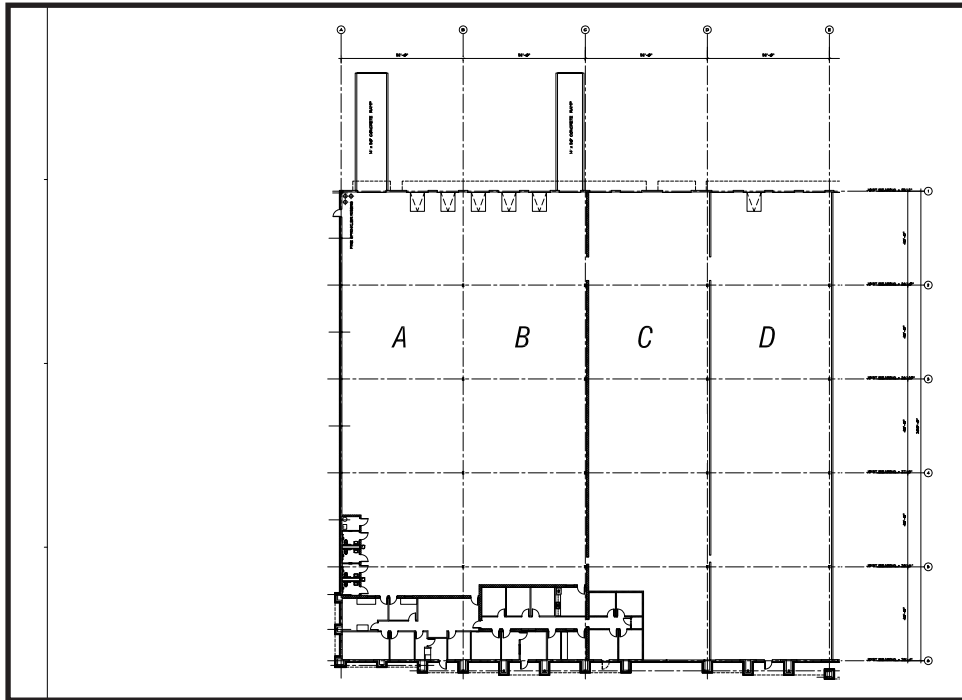
0.3 GPM over the most remote 3,000 SF sprinkler system

Located in Oakwood South Industrial Park

Available August 2025

# SITE PLAN & FLOOR PLAN

5445 Rafe Banks Drive, Units A-D, Flowery Branch, GA 30542



**Floyd H. Baldwin, SIOR**  
fbaldwin@ipgproperties.com  
770.287.5288 (cell)  
770.536.6555 x 222 (office)

**Drew C. Addison, SIOR**  
daddison@ipgproperties.com  
678.316.2409 (cell)  
770.536.6555 x 232 (office)

**Palmer H. Loggins**  
ploggins@ipgproperties.com  
770.561.3751 (cell)  
770.536.6555 x 234 (office)



# LOCATION

5445 Rafe Banks Drive, Units A-D, Flowery Branch, GA 30542



## ABOUT HALL COUNTY:

Hall County is the epicenter of an aggressive economic environment in Northeast Georgia. Growth in both population, now estimated at 200,000, and economic bases has been steady and diversified for the last 20 years. The labor market is thriving with regional labor market numbers estimated to be 775,000 from Hall and surrounding counties.

## DISTANCES:

I-985, Exit 14:	±1.7 miles	Hartsfield Jackson Int'l Airport:	±57 miles
I-85:	±14 miles	Gainesville Inland Port:	±16 miles
I-285:	±28 miles	Inland Port Greer (South Carolina):	±125 miles
Downtown Atlanta:	±41 miles	Port of Savannah:	±251 miles
Greenville, SC:	±110 miles	Port of Charleston:	±296 miles

**Floyd H. Baldwin, SIOR**

fbaldwin@ipgproperties.com

770.287.5288 (cell)

770.536.6555 x 222 (office)

**Drew C. Addison, SIOR**

daddison@ipgproperties.com

678.316.2409 (cell)

770.536.6555 x 232 (office)

**Palmer H. Loggins**

ploggins@ipgproperties.com

770.561.3751 (cell)

770.536.6555 x 234 (office)

